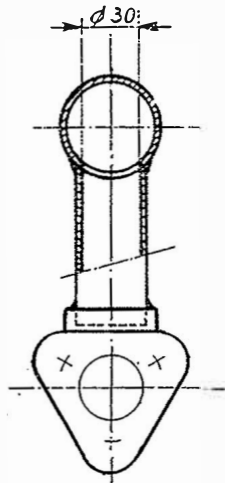


Ver. No. 46 / 628
Siz. No.



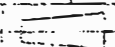
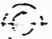
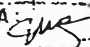
Coupe B-B

29 Motor için
15-8-90
A. K.

Tadilat A = Ölçü değişikliği yapıldı. 22.2.90
B = Elçü değişikliği yapıldı. 16.11.90

Revizyon C : Paz 4 ilave oldu 14.05.2010

4		1	Flanşlı dirsek (Resim No: 590 483)		
3	04303302	1	Boru Tube $\phi 337-2,9$ Long ^r 72 mm	NEA 49112	
2	04303302	1	Boru Tube $\phi 337-2,9$ Long ^r 779 mm	NEA 49112	
1	04304801	1	Boru Tube $\phi 48,3-2,6$ Long ^r 578 mm	NEA 49112	
REP	CODIFICATION	Q.té	DESIGNATION	N° DE PLAN	OBSERV

MATERIE		TRAITEMENT	
ECHELLE 1/25. 1/1			MASSE (kg)
DES. Filcur Le. 27.2.86	VERIF. FONDIN Le. 10-03-86	VISA: 	

TUYAUTERIE D'EAU T.S. H.S

sortie d'eau T.S

Turbo su çıkış borusu

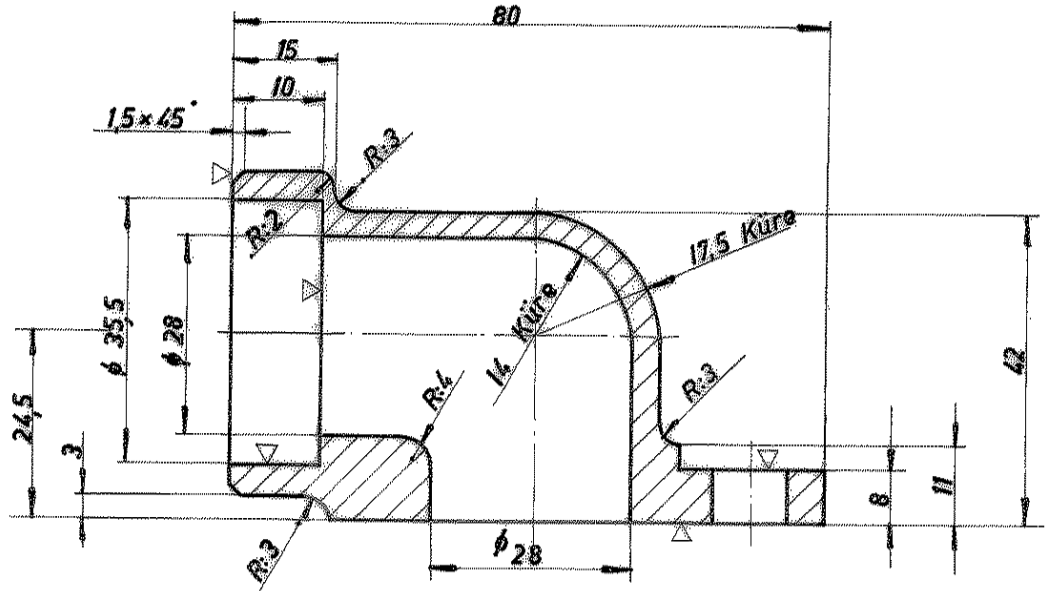
ALSTHOM
ATLANTIQUE

FORMAT A3	ADDITIONNEL AU PLAN NSE 9.19	ORGANE NOMEN. 45A
--------------	---------------------------------	----------------------

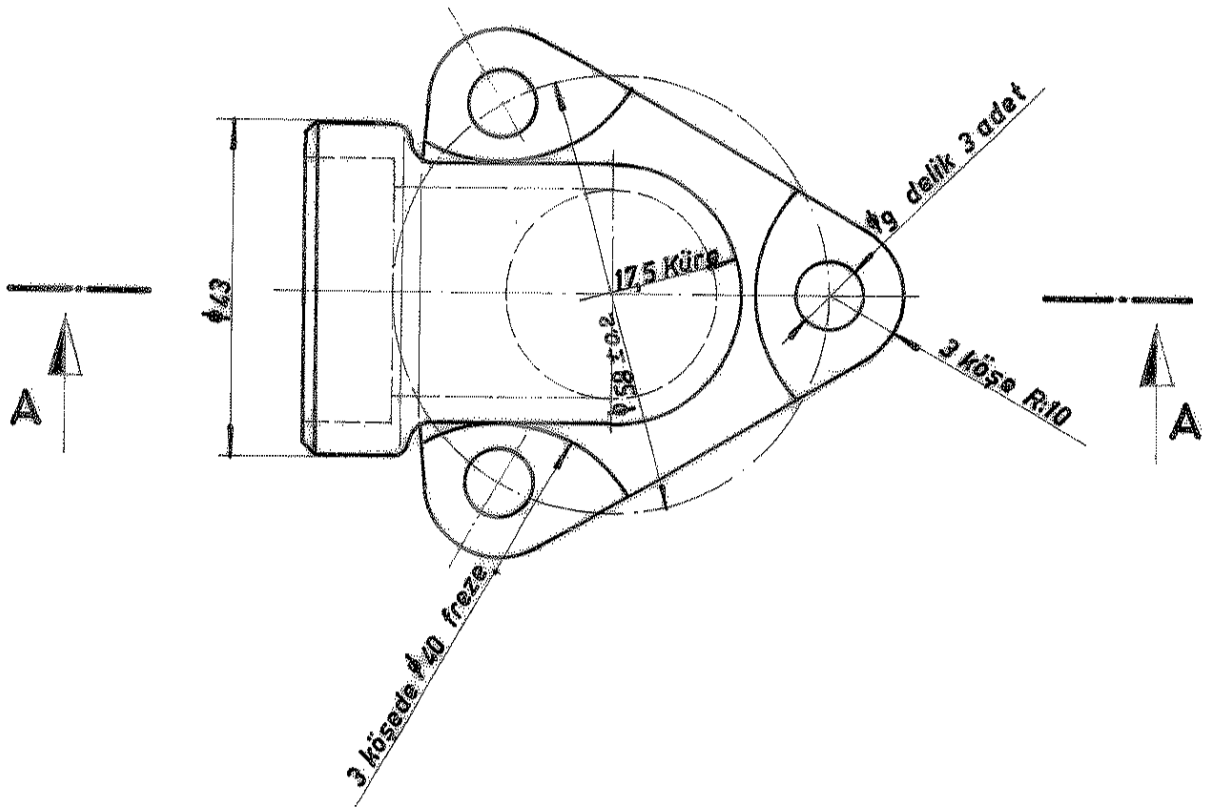
16 PA 4-200	

**ALSTHOM
ATLANTIQUE**

Revizyon C : Poz 4 ilave oldu 14.05.2010



A-A kesiti



FLÂNŞLI DİRSEK

G-Cuzn 37

DIN 17672 Blott.1

Adet

Parçanın Adı

Yer

Malzeme

İş

İş

Kontrol-Pay-İş

45 J

Tadilat

Gün-Öny

18.9.987

İşe bakan

Y. DİNC

Resim

B. BOZ

Kontrol

M. ERDEM

Ölçek

1:1

FLÂNŞLI DİRSEK

590 483